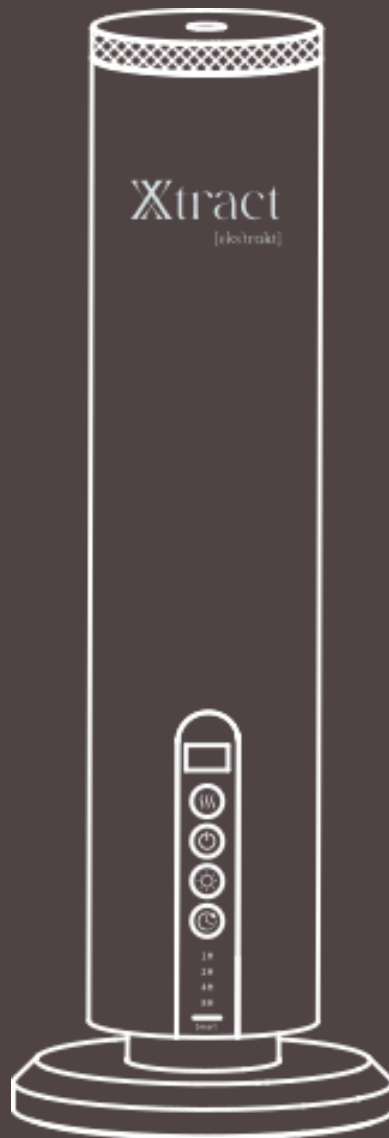


Odyscent Aroma Diffuser User Manual



About	3
Safety instructions	4
Included.....	5
Overview.....	6
Installing the device	7
Filling the device	8
Using the Buttons	9
Using the Xtract Fragrance app	10
Connecting your device to the app.....	10
Adding a time schedule	10
Activate or deactivate a schedule	11
Delete a schedule	11
Calibrate your device	11
Change the device name and label	11
Change the password.....	11
Reset a password	12
Maintenance	13
To clean the device.....	13
To clean the casing.....	13
Storage	14
Troubleshooting.....	15
Disposal	16
Consumption	17
Technical Specifications	18
ISED Statement - FCC Statement.....	19

ABOUT

Handcrafted from aerospace-grade materials, the Xtract Odyscent Aroma Diffuser features ambient lighting to create a luxurious ambiance. This diffuser features an easy-to-use touchscreen interface and can be easily controlled via the Xtract Fragrances app.

With a powerful 2200mAh lithium battery, this diffuser provides over 100 hours of use, so you can enjoy its aromatic benefits for a long time.

SAFETY INSTRUCTIONS

- Read this manual in detail before using the device. Keep the manual for future reference.
- Do not use damaged power sockets, cables or power adapters. It may endanger your safety and cause a fire, please replace in time if it happens.
- The device does not contain any user-serviceable parts. Do not modify, disassemble or repair the device yourself.
- Do not tilt the device. A tilted or angled device may cause oil to overflow and damage the device.
- Clean the device and empty any remaining oil before transporting it.
- Maintain and clean the device regularly to ensure the device in best working states. See the section Maintenance below.

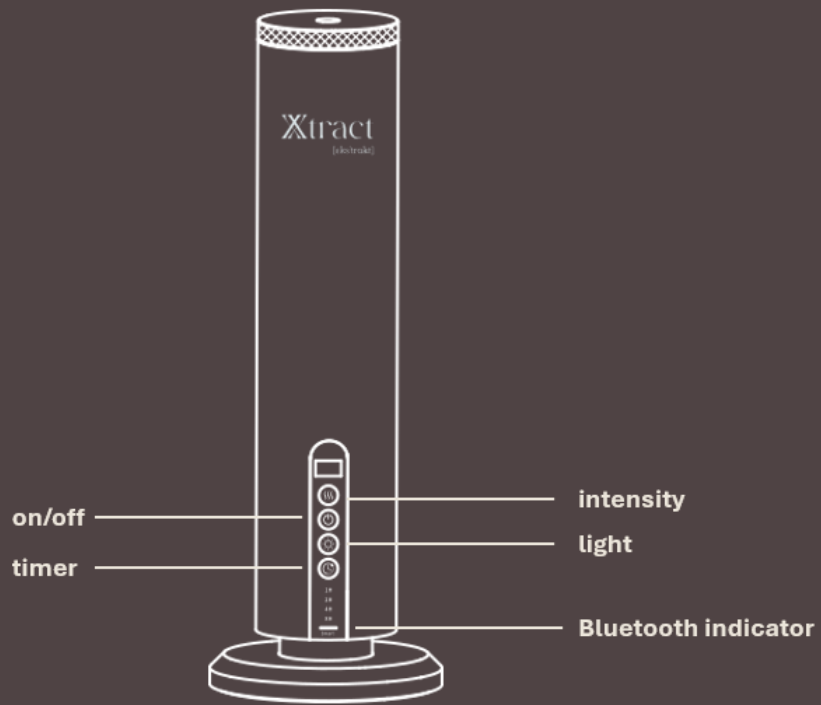
INCLUDED

Your device comes with the following items:

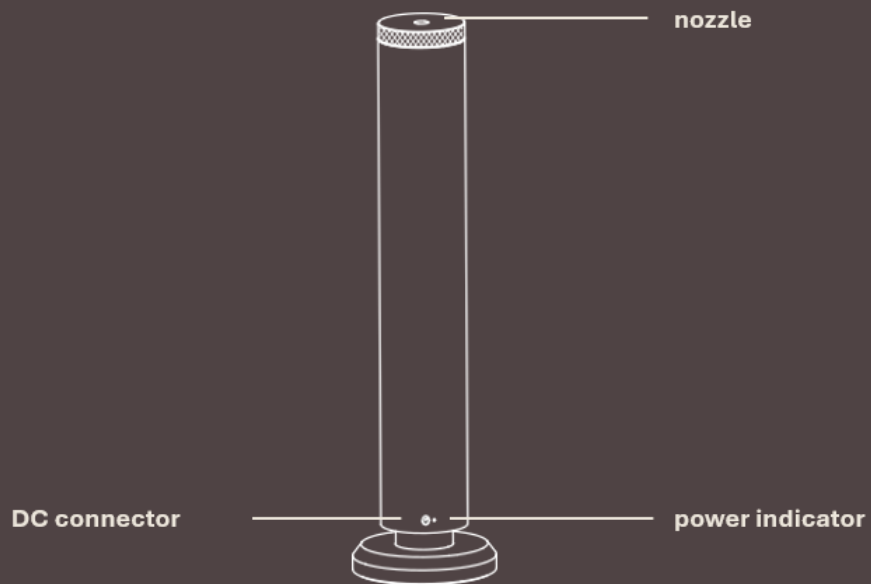
- The device
- A bottle
- Bottle cap
- Power adapter
- Tube
- This user manual

OVERVIEW

Front



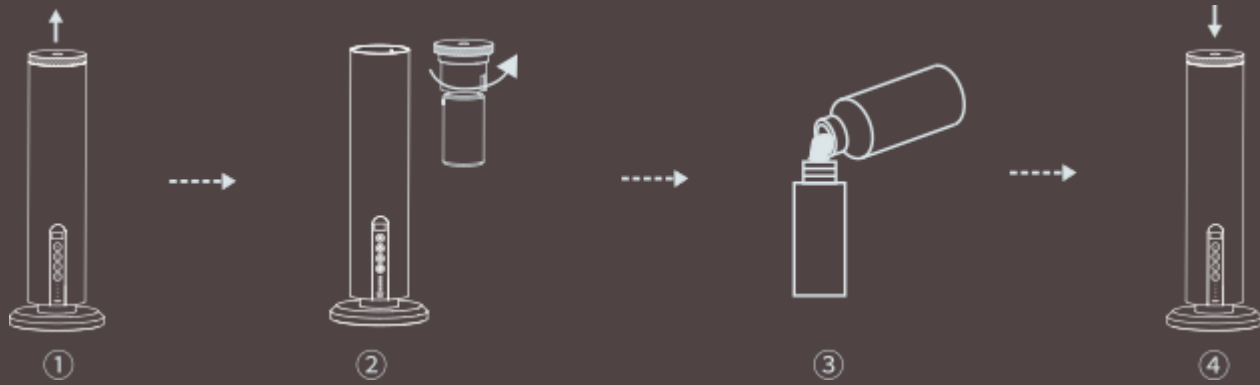
Back



INSTALLING THE DEVICE

- Plug the power cord into the DC connector on the device.
- Plug the power adapter into the power socket.

FILLING THE DEVICE



- Remove the diffuser head.
- Twist off the bottle.
- Fill the bottle with essential oil.
- Put the bottle and diffuser head back in the device.

USING THE BUTTONS

Intensity	<ul style="list-style-type: none"> - Short press to change intensity: 1+2+3+4+5+Custom
On/off	<ul style="list-style-type: none"> - Power on: short press to turn on the device. - Power off: short press to turn off the device. - Long press for 5 seconds to restore to factory settings (including levels, programs, and password). - If the app is connected, the Smart light will flash.
Light	<ul style="list-style-type: none"> - Press to turn the ambient light On/Off - The light can also be switched on/off when the diffuser is off, so it can be used as a night light.
App Connection indicator	<ul style="list-style-type: none"> - Bluetooth paired: indicator remains on. - Data receiving: indicator flashes. - Bluetooth unpaired: indicator is off.
Timer	<ul style="list-style-type: none"> - Press once to switch to a different timer. - When you switch on the device, the default timer setting is 24-hour operation. <p>The timer can be set to 1 H-- +2H-.....+4H-.....+8H-.....></p> <p>Smart and 24H modes.</p>
Power indicator	<ul style="list-style-type: none"> - The power indicator flashes when charging. - The power indicator is green and always on when fully charged. - The indicator light is red when the battery percentage is less than 20%. - The indicator light is green when the battery percentage is less than 20%.

USING THE XTRACT FRAGRANCE APP

Download the Xtract Fragrance app on your device

Android®






iOs®



Connecting your device to the app

Make sure the Bluetooth® function of your mobile device is switched on.

<p>Open the Xtract Fragrance app and tap Bluetooth version.</p>	
<p>Select your device.</p>	
<p>Enter the default password (8888) and tap Login. You can change the default password. See section Change the password below.</p>	

Adding a time schedule

You can define up to 5 time schedules.

- Go to **Device Control**.
 - In the **Schedule** section, tap + to add a time schedule.
 - On the **Working period setting** page, set the days and hours of the day you want your diffuser to run:
 - Set the start working time.
 - Set the stop working time.
 - Select the day or days.
 - Tap + or - to set an intensity preset (from 1 to 5).
- See section **Consumption** below for more information about intensity.

To set a custom intensity:

- Check the **Custom** checkbox.
- Set the **Work time(s)** and **Stop time(s)**.
- Tap **Save**.

Activate or deactivate a schedule

- Tap the toggle button next to a schedule to activate or deactivate it.

Delete a schedule

- Swipe left on a schedule to delete it.

Calibrate your device

We recommend calibrating your device's consumption after it worked for at least 10 days.

- Measure the oil quantity of the bottle before calibrating.
- In the app, tap **Device Control**.
- Tap **Calibrate**.
- Enter the current oil volume.
- Tap **Confirm**. The app displays the number of remaining days.

Change the device name and label

- Tap **Device Control**.
- Change the device name and label (for example the fragrance you are using).
- Tap **Save**.

Change the password

- Open the **Device Control** page.
- Tap **About**.
- Tap **Password change**.
- Enter a new password (4 digits).
- Re-enter the password.
- Tap **Confirm**.

Reset a password

If you have forgotten your password:

- On the device, press and hold the On/Off button for 5 seconds. This will restore factory settings and remove all settings.
- You can now access your device with the default password 8888.

MAINTENANCE

Cleaning frequency depends on operating frequency. To ensure optimal operation of your device, check and maintain the device:

- at least every six months;
- when using a new fragrance;
- when the diffuser volume weakens.

To clean the device

- Switch off the device.
- Remove the oil canister from the device.
- Poor a little industrial alcohol into the canister, clean it and pour off the alcohol.
- When done, poor a little alcohol into the canister and install it in the device.
- Switch on the device and set it to operate for 5 to 10 minutes.
- Switch off the device, remove it from the power socket and finish cleaning.

To clean the casing

- Use a soft cloth to clean the casing.
- Do not immerse the device in any liquid.

STORAGE

- Switch off the device when not in use.
- Do not move the device while in use.
- Remove the power cord from the power socket before cleaning.
- Store the device in a dry and clean place.

TROUBLESHOOTING

Device does not diffuse	<ul style="list-style-type: none">- Check whether the device is switched on.- The air pump may be damaged. Contact your dealer.- Check whether the air tube on the diffuser head is loose. Re-tighten if necessary.
Weak diffuser	<ul style="list-style-type: none">- The tube may be clogged. Clean it with alcohol or replace it.- Check whether the gasket in the diffuser head is loose or damaged.- Check whether the air tube is loose. Re-tighten it if necessary.
Oil leakage	<ul style="list-style-type: none">- Check whether the bottle is loose. Re-tighten it if necessary.- Check whether the gasket in the diffuser head is loose or damaged.
Oil sprinkle	<ul style="list-style-type: none">- Check whether the device stands upright.- The diffuser head may be damaged. Contact your dealer.
Unusual noise	<ul style="list-style-type: none">- The air pump may be loose. Re-tighten it if necessary.- The air pump may be damaged. Contact your dealer.

DISPOSAL

Do not dispose of the unit (or batteries) as unsorted municipal waste; This device should be returned to your distributor or to a local recycling service. Respect the local environmental rules.

CONSUMPTION

The device will consume oil depending on the intensity:

Intensity	Working time (s)	Pause (s)	Battery life (h)	Consumption (g/h)
G1	5	240	200	0,05
G2	15	200	80	0,17
G3	20	160	50	0,27
G4	25	100	29	0,49
G5	25	60	20	0,72
custom	5 to 35s	60-300	-	-

TECHNICAL SPECIFICATIONS

Dimensions	Φ117 x 342 mm
Package Dimensions	195 x 195 x 235 mm (width x depth x height)
Canister Capacity	120 ml
Net weight	1.35 kg
Coverage	100 m ²
Voltage	Lithium 2200 mAh
Power	4 W
Rated input	12 V—2200 mAh
Noise	39.5 dB

ISED STATEMENT - FCC STATEMENT

ISED Statement	FCC Statement
<p>This device contains licence-exempt transmitter(s)/receiver(s) that comply with Innovation, Science and Economic Development Canada's licence-exempt RSS(s). Operation is subject to the following two conditions:</p> <p>(1) This device may not cause interference.</p> <p>(2) This device must accept any interference, including interference that may cause undesired operation of the device.</p> <p>The digital apparatus complies with Canadian CAN ICES-3 (B)/NMB-3(B).</p> <p>This device meets the exemption from the routine evaluation limits in section 2.5 of RSS 102 and compliance with RSS 102 RF exposure, users can obtain Canadian information on RF exposure and compliance.</p> <p>This equipment complies with Canada radiation exposure limits set forth for an uncontrolled environment.</p> <p>This equipment should be installed and operated with minimum distance 20cm between the radiator & your body.</p>	<p>This device complies with part 15 of the FCC Rules. Operation is subject to the following two conditions:</p> <p>(1) This device may not cause harmful interference, and</p> <p>(2) this device must accept any interference received, including interference that may cause undesired operation.</p> <p>This equipment has been tested and found to comply with the limits for a Class B digital device, pursuant to part 15 of the FCC Rules. These limits are designed to provide reasonable protection against harmful interference in a residential installation. This equipment generates, uses and can radiate radio frequency energy and, if not installed and used in accordance with the instructions, may cause harmful interference to radio communications. However, there is no guarantee that interference will not occur in a particular installation. If this equipment does cause harmful interference to radio or television reception, which can be determined by turning the equipment off and on, the user is encouraged to try to correct the interference by one or more of the following measures:</p> <ul style="list-style-type: none"> - Reorient or relocate the receiving antenna. - Increase the separation between the equipment and receiver. - Connect the equipment into an outlet on a circuit different from that to which the receiver is connected. - Consult the dealer or an experienced radio/TV technician for help. <p>FCC Caution</p> <p>Any changes or modifications not expressly approved by the party responsible for compliance could void the user's authority to operate the equipment. This transmitter must not be co-located or operating in conjunction with any other antenna or transmitter. Not applicable</p> <p>RF Exposure</p> <p>This device complies with FCC radiation exposure limits set forth for an uncontrolled environment. This equipment should be installed and operated with minimum distance 20cm between the radiator & your body.</p>